

# nomads

LIVE • BREATHE • WEAR



AUTUMN WINTER 26

# AUTUMN WINTER 26

## DISCOVER THE NEW SEASON WITH OUR AUTUMN WINTER '26 COLLECTION

As we embrace the shifting seasons, we are delighted to unveil a thoughtfully curated array of new designs, refined styles, and inspiring trends. Our AW26 capsule collections blend enduring Nomads classics with contemporary detailing, offering a range of pieces that celebrate comfort, creativity, and everyday style.

This season you'll discover a mix of standout statement pieces and versatile wardrobe staples, each crafted to transition seamlessly through your day. Rich textures, cosy fabrics, and a palette of bold yet wearable colours come together to create a collection that feels both fresh and distinctly Nomads. We are excited to introduce updated designs in our much-loved cord, beautifully soft knitwear in vibrant hues, and a selection of woven viscose prints that bring depth and character to your winter wardrobe.

We remain proudly committed to being a GOTS certified company, ensuring you can rely on us for ethically produced favourites, including organic cotton, throughout the season.

With warmth, The Nomads Team x

## CONTACT US

---

info@nomadsclothing.co.uk / nomadsclothingwholesale.com  
(0044) 1566 777338







# OUR WORLD

We believe that feeling good in what we wear comes down to more than just looks. Style shouldn't come at a cost to people, animals or the planet. By embracing the slow fashion movement, we take the time to ensure quality production and to give value to the skilled hands that produce each product.

We ask all of our suppliers to sign our Code of Conduct and expect complete transparency throughout the production process. All except the very smallest of our producers have a SEDEX or BSCI certification, which means they go

beyond the levels of ethical conduct required by law. Some of them are also GOTS certified, as are we. We personally know where our products are made and have a good relationship with each factory.

Our India based production manager, Manoj, visits our Indian suppliers regularly throughout the year, even when our team in the UK can't get there, to ensure that our standards are being met.

Our commitment to responsible fashion means you feel better about what you wear.



## OUR FABRICS

**ROOTED IN SLOW FASHION AND CLASSIC DESIGNS, WE STRIVE TO SOURCE OUR FABRICS AS RESPONSIBLY AND AS NATURAL AS POSSIBLE. MORE RECENTLY WE HAVE ADDED KNITWEAR FROM CHINA TO WIDEN OUR OFFERING IN RECYCLED YARNS THIS WINTER.**



### ORGANIC COTTON

Organic is our preferred choice when it comes to cotton as it is grown without the use of harmful elements – kindest to PLANET, PRODUCERS & PEOPLE who wear it. We are proud to be GOTS certified – it is the GOLD standard when it comes to the sustainable processing of textiles worldwide.



### COTTON

From cotton poplin to cotton slub, cotton drill and chunky cord, this fibre is so versatile and creates such a variety of fabrics. Natural, breathable and biodegradable. Whilst Drill is a heavier cotton fabric with a twill weave, similar in structure to denim, so perfect for trousers and jackets on a cooler day.



### LENZING ECOVERO

Lenzing EcoVero™ fibres make beautiful jersey and woven fabrics that have a soft drape. EcoVero™ is made using sustainable wood pulp from certified and controlled wood sources and is produced to high ecological standards and has been awarded the EU Ecolabel for environmental excellence.



### LENZING TENCEL™

Naturally hypoallergenic fibres are extracted from sustainably grown wood pulp from certified forests and produced using a unique closed-loop system which recovers and reuses the solvents used, minimising the environmental impact of production.



### RECYCLED POLYESTER

Our garments incorporate recycled polyester to deliver the same durability and comfort as traditional fibres. Recycled poly fibres bring strength, shape retention, and versatility to everyday wear. The result is a fabric that supports performance, longevity, and modern design needs.





THREE CURATED  
COLOUR STORIES,  
DESIGNED TO INSPIRE  
THE AUTUMN WINTER  
SEASON AHEAD.



# OUR COLLECTIONS



/ 08  
AUTUMN LEAVES

Rich Autumnal colours in Burgundy, Ochre and Sunset with new exclusive prints and returning our chunky cord.



/ 24  
MORNING DEW

A cool winter Teal & Duck Egg palette with pops of fresh Citrus, featuring embroidery and Organic Cotton.



/ 38  
WINTER FROST

Classic Navy with on-trend pops of Lilac and Mint gives this group a fresh and modern look.



/ 52  
NEUTRAL EDIT

Versatile neutrals designed to mix and match effortlessly. With textured knits, relaxed trousers and new jackets.



AUTUMN LEAVES





# AUTUMN LEAVES



Rich Autumnal colours in Burgundy, Ochre and Sunset launch the new collection, with fresh new prints, all exclusive to Nomads including the contemporary Scallop print, beautifully artistic Painterly Floral and dramatic Brushstroke print.

Firm favourite fabrics return including the chunky cord in essential separates and the textured Tencel in both print and plain for modern statement pieces. New for this season is our Organic Cotton textured jersey, here in easy to wear plain Burgundy pieces, including a cosy co-ord and gathered dress.







TT4290 / Tie Detail Top / 100% Textured Tencel / Sunset / Sizes 8-18

BS8061 / Skirt / 100% Textured Tencel / Burgundy / Sizes 8-18

TT2164 / Tiered Dress / 100% Textured Tencel / Sunset / Sizes 8-18



KR7110 / Plain Cropped Jumper  
59% Recycled Polyester, 18% Polyester,  
15% Nylon, 7% Wool, 1% Elastane  
Sunset / Sizes S, M, L

BS2256 / Barrel Dress  
100% Textured Tencel  
Burgundy / Sizes 8-18



BS4221 / Oversized Shirt  
100% Textured Tencel  
Burgundy / Sizes 8-18

KR7111 / Plain Cardi  
59% Recycled Polyester, 18% Polyester,  
15% Nylon, 7% Wool, 1% Elastane  
Sunset / Sizes S, M, L





CD6044 / Patch Pocket Jacket  
100% Cotton Drill  
Ochre / Sizes 8-18

CD1130 / Wide Leg Trousers  
100% Cotton Drill  
Ochre / Sizes 8-18



KP7114 / Pointelle Knit Jumper  
59% Recycled Polyester, 18% Polyester,  
15% Nylon, 7% Wool, 1% Elastane  
Caramel / Sizes S, M, L

CD1125 / Barrel Leg Trousers  
100% Cotton Drill  
Ochre / Sizes 8-18



CD3203 / Cotton Drill Dress  
100% Cotton Drill  
Ochre / Sizes 8-18

KP7097 / Pointelle Knitted Vest  
59% Recycled Polyester, 18% Polyester,  
15% Nylon, 7% Wool, 1% Elastane  
Caramel / Sizes S, M, L





NR6042 / Cord Jacket  
100% Cotton Chunky Cord  
Burgundy / Sizes 8-18

NR1124 / Cord Bubble Trousers  
100% Cotton Chunky Cord  
Burgundy / Sizes 8-18



HL4185 / Simple Printed Top  
100% Lenzing Ecovero Jersey  
Ochre / Sizes 8-18

NR8067 / Mini Skirt  
100% Cotton Chunky Cord  
Burgundy / Sizes 8-18



NR3202 / Buttoned Through Pinafore Dress  
100% Cotton Chunky Cord  
Burgundy / Sizes 8-18

HL2261 / Shirt Dress  
100% Lenzing Ecovero Jersey  
Ochre / Sizes 8-18



HL4273 / Gathered Top / 100% Lenzing Ecovero Jersey / Ochre / Sizes 8-18

NR1124 / Cord Bubble Trousers / 100% Cotton Chunky Cord / Burgundy / Sizes 8-18

HL3199 / Boat Neck Dress / 100% Lenzing Ecovero Jersey / Ochre / Sizes 8-18







SC2255 / Smocked Dress / 100% Viscose Twill / Sunset / Sizes 8-18



SC4277 / Puff Sleeved Top / 100% Viscose Twill / Sunset / Sizes 8-18

SC4282 / Buttoned Top / 100% Viscose Twill / Sunset / Sizes 8-18



PF2206 / Puff Sleeve Dress / 100% Heavy Viscose / Sunset / Sizes 8-18



PF4273 / Raglan Blouse / 100% Heavy Viscose / Sunset / Sizes 8-18





EM4283 / Embroidered Tuck Detail Shirt  
100% Viscose Moss Crepe  
Wax / Sizes 8-18

KR7108 / Fairisle Jumper  
59% Recycled Polyester, 18% Polyester,  
15% Nylon, 7% Wool, and 1% Elastane  
Wax / Sizes S, M, L



CP4288 / Oversized Poplin Shirt  
100% Cotton Poplin  
Pink / Sizes 8-18

OC4280 / Gathered Top  
100% GOTS Organic Cotton Jersey  
Ivory / Sizes 8-18



EM4289 / Embroidered Top  
100% Viscose Moss Crepe  
Wax / Sizes 8-18







SC2255 / Smocked Dress  
100% Viscose Twill  
Burgundy / Sizes 8-18

SC3204 / Tie Neck Dress  
100% Viscose Twill  
Burgundy / Sizes 8-18

SC4282 / Buttoned Top  
100% Viscose Twill  
Burgundy / Sizes 8-18



TJ2249 / Relaxed Textured Jersey Dress  
97% GOTS Organic Textured Jersey Cotton,  
3% Elastane  
Burgundy / Sizes 8-18



SC4277 / Puff Sleeved Top  
100% Viscose Twill  
Burgundy / Sizes 8-18



TJ4284 / Textured Jersey Top  
97% GOTS Organic Textured Jersey Cotton,  
3% Elastane  
Burgundy / Sizes 8-18

SC1122 / Wide Leg Trousers  
100% Viscose Twill  
Burgundy / Sizes 8-18

TJ1123 / Textured Jersey Barrel Trousers  
97% GOTS Organic Textured Jersey Cotton,  
3% Elastane  
Burgundy / Sizes 8-18



A woman with light brown hair stands with her arms crossed, leaning against a rustic stone wall. She is wearing a mustard-colored jacket with two visible buttons and a long skirt with a vibrant floral pattern in blue, yellow, and white. The background features a rolling landscape with green fields, trees with autumn foliage, and distant hills under a soft, overcast sky.

MORNING DEW



# MORNING DEW



A cool winter Teal and Duck Egg palette with pops of fresh Citrus in our must-have oversized poplin shirt and asymmetric jersey dress. Our new Organic Cotton textured jersey returns again, this time in our new Spot print. Choose from a midi bubble dress or fit and flare shorter length dress, a tunic length fit-and-flare top or shorter boxy top.

Our Ginko print (above far left) is the everyday essential print, so easy to wear and ideal to layer under our GOTS certified Organic Cotton / Wool knitwear on those cooler days.







PF2251 / Easy Pleat Dress  
100% Heavy Viscose  
Navy / Sizes 8-18



OC2258 / Asymmetric Dress  
95% Organic Cotton, 5% Elastane Jersey  
Citrus / Sizes 8-18



PF2206 / Puff Sleeve Dress  
100% Heavy Viscose  
Navy / Sizes 8-18



K07094 / Cardigan  
80% GOTS Organic Cotton, 20% Wool  
Citrus / Sizes S, M, L

PF8066 / Printed Skirt  
100% Heavy Viscose  
Navy / Sizes 8-18



OC4249 / Roll Neck Top  
95% Organic Cotton, 5% Elastane Jersey  
Navy / Sizes 8-18



CP4288 / Oversized Poplin Shirt  
100% Cotton Poplin  
Citrus / Sizes 8-18



OC4249 / Roll Neck Top  
95% Organic Cotton, 5% Elastane Jersey  
Citrus / Sizes 8-18

CD1130 / Wide Leg Trousers  
100% Cotton Drill  
Wax / Sizes 8-18





EM4283 / Embroidered Tuck Detail Shirt  
100% Viscose Moss Crepe  
Teal / Sizes 8-18

CD3203 / Cotton Drill Dress  
100% Cotton Drill  
Teal / Sizes 8-18



EM2253 / Embroidered Dress  
100% Viscose Moss Crepe  
Teal / Sizes 8-18

CD1130 / Wide Leg Trousers  
100% Cotton Drill  
Teal / Sizes 8-18



EM4289 / Embroidered Top  
100% Viscose Moss Crepe  
Teal / Sizes 8-18





PF4288 / Oversized Printed Shirt / 100% Cotton Slub / Wax / Sizes 8-18

PF4273 / Raglan Blouse / 100% Cotton Slub / Wax / Sizes 8-18

CD1130 / Wide Leg Trousers / 100% Cotton Drill / Wax / Sizes 8-18



NR6042 / Cord Jacket  
100% Cotton Chunky Cord  
Duck Egg / Sizes 8-18

NR8067 / Mini Skirt  
100% Cotton Chunky Cord  
Duck Egg / Sizes 8-18



NR2252 / Easy Dress  
100% Cotton Chunky Cord  
Duck Egg / Sizes 8-18

CP4288 / Oversized Poplin Shirt  
100% Cotton Poplin  
White / Sizes 8-18



NR6042 / Cord Jacket  
100% Cotton Chunky Cord  
Duck Egg / Sizes 8-18

NR1124 / Cord Bubble Trousers  
100% Cotton Chunky Cord  
Duck Egg / Sizes 8-18





**OC4280 / Gathered Top**  
100% Organic Cotton Jersey  
Duck Egg / Sizes 8-18

**KR7110 / Plain Cropped Jumper**  
59% Recycled Polyester, 18% Polyester,  
15% Nylon, 7% Wool, 1% Elastane  
Duck Egg / Sizes S, M, L

**SP4284 / Textured Jersey Top**  
97% GOTS Organic Textured Jersey Cotton,  
3% Elastane  
Navy & Duck Egg / Sizes 8-18

**KR7111 / Plain Cardi**  
59% Recycled Polyester, 18% Polyester,  
15% Nylon, 7% Wool, 1% Elastane  
Duck Egg / Sizes S, M, L



**SP2156 / Textured Bubble Dress**  
97% GOTS Organic Textured Jersey Cotton,  
3% Elastane  
Navy & Duck Egg / Sizes 8-18



**SP5108 / Notch Neck Tunic Top**  
97% GOTS Organic Textured Jersey Cotton,  
3% Elastane  
Navy & Duck Egg / Sizes 8-18



**SP3171 / Textured Jersey Dress**  
97% GOTS Organic Textured Jersey Cotton,  
3% Elastane  
Navy & Duck Egg / Sizes 8-18

**OC1050 / Yoga Trousers**  
95% Organic Cotton, 5% Elastane Jersey  
Navy / Sizes 8-18





GK4278 / Printed Shirt  
100% Lenzing Ecovero  
Teal / Sizes 8-18

KR7111 / Striped Cardigan  
59% Recycled Polyester, 18% Polyester,  
15% Nylon, 7% Wool, 1% Elastane  
Teal / Sizes S, M, L

KO7094 / Cardigan  
80% GOTS Organic Cotton, 20% Wool  
Citrus / Sizes S, M, L

GK3179 / Pintuck Dress  
100% Lenzing Ecovero  
Teal / Sizes 8-18

GK4286 / Pintuck Blouse  
100% Lenzing Ecovero  
Teal / Sizes 8-18

KO7094 / Cardigan  
80% GOTS Organic Cotton, 20% Wool  
Teal / Sizes S, M, L

KO7097 / Knitted Vest  
80% GOTS Organic Cotton, 20% Wool  
Teal / Sizes S, M, L

KO7097 / Knitted Vest  
80% GOTS Organic Cotton, 20% Wool  
Citrus / Sizes S, M, L





WINTER FROST



# WINTER FROST



Classic Navy with on-trend pops of Lilac and Mint gives this group a fresh and modern look. On Textured Tencel, our striking Brushstroke print pulls together all the colours, in styles including a bubble dress and oversized shirt - perfect layered with our Lilac recycled knitwear or cosy Navy cord. For a lighter look try pairing with our Wax cotton drill essentials.

We've introduced denim to our range this season; a wide-leg jean, an oversized jacket, and a charming pinafore dress. They can be styled with our printed shirts and organic cotton jersey tops, then add one of our pretty recycled pointelle knits when the winter chill sets in.







**KR7111 / Plain Cardi**  
 59% Recycled Polyester, 18% Polyester,  
 15% Nylon, 7% Wool, 1% Elastane  
 Lilac / Sizes S, M, L

**OC4280 / Gathered Top**  
 100% GOTS Organic Cotton Jersey  
 Ivory / Sizes 8-18

**KR7110 / Plain Cropped Jumper**  
 59% Recycled Polyester, 18% Polyester,  
 15% Nylon, 7% Wool, 1% Elastane  
 Lilac / Sizes S, M, L

**BS4221 / Oversized Shirt**  
 100% Textured Tencel  
 Navy / Sizes 8-18



**BS2256 / Barrel Dress** / 100% Textured Tencel / Navy / Sizes 8-18  
**KR7110 / Plain Cropped Jumper** / 59% Recycled Polyester, 18% Polyester, 15% Nylon, 7% Wool, 1% Elastane  
 Lilac / Sizes S, M, L

**BS8061 / Skirt** / 100% Textured Tencel / Navy / Sizes 8-18





CD6044 / Patch Pocket Jacket  
100% Cotton Drill  
Wax / Sizes 8-18

GK3179 / Pintuck Dress  
100% Lenzing Ecovero  
Navy / Sizes 8-18

GK4286 / Pintuck Blouse  
100% Lenzing Ecovero  
Navy / Sizes 8-18

CD1130 / Wide Leg Trousers  
100% Cotton Drill  
Wax / Sizes 8-18

CD1125 / Barrel Leg Trousers  
100% Cotton Drill  
Wax / Sizes 8-18

GK4278 / Printed Shirt  
100% Lenzing Ecovero  
Navy / Sizes 8-18

K07094 / Cardigan  
80% GOTS Organic Cotton, 20% Wool  
Wax / Sizes S, M, L

K07094 / Cardigan  
80% GOTS Organic Cotton, 20% Wool  
Navy / Sizes S, M, L

K07097 / Knitted Vest  
80% GOTS Organic Cotton, 20% Wool  
Navy / Sizes S, M, L

K07097 / Knitted Vest  
80% GOTS Organic Cotton, 20% Wool  
Wax / Sizes S, M, L





DN3205 / Pinafore Dress  
100% Cotton Denim  
Denim / Sizes 8-18



DN6041 / Denim Jacket  
100% Cotton Denim  
Denim / Sizes 8-18

CD1130 / Wide Leg Trousers  
100% Cotton Drill  
Wax / Sizes 8-18



OC4279 / Button Through Jersey Top  
100% GOTS Organic Cotton Jersey  
Ivory / Sizes 8-18

DN1118 / Wide Leg Jeans  
100% Cotton Denim  
Denim / Sizes 8-18







KR7119 / Striped Cropped Jumper  
59% Recycled Polyester, 18% Polyester,  
1 5% Nylon, 7% Wool, 1% Elastane  
Wax & Navy / Sizes S, M, L

KR7108 / Fairisle Jumper  
59% Recycled Polyester, 18% Polyester,  
15% Nylon, 7% Wool, 1% Elastane  
Navy / Sizes S, M, L

KR7097 / Fairisle Knitted Vest  
59% Recycled Polyester, 18% Polyester,  
15% Nylon, 7% Wool, 1% Elastane  
Navy / Sizes S, M, L

KP7114 / Pointelle Knit Jumper  
59% Recycled Polyester, 18% Polyester,  
15% Nylon, 7% Wool, 1% Elastane  
Wax / Sizes S, M, L

KP7097 / Pointelle Knitted Vest  
59% Recycled Polyester, 18% Polyester,  
15% Nylon, 7% Wool, 1% Elastane  
Wax / Sizes S, M, L



OC4279 / Button Through Jersey Top  
100% GOTS Organic Cotton Jersey  
Ivory / Sizes 8-18

OC1050 / Yoga Trousers  
95% Organic Cotton, 5% Elastane Jersey  
Navy / Sizes 8-18



OC4280 / Gathered Top  
100% Organic Cotton Jersey  
Ivory / Sizes 8-18

OC1043 / Leggings  
95% Organic Cotton, 5% Elastane Jersey  
Navy / Sizes 8-18



CP4288 / Oversized Poplin Shirt  
100% Cotton Poplin  
White / Sizes 8-18

DN1118 / Wide Leg Jeans  
100% Cotton Denim  
Denim / Sizes 8-18





HL3199 / Boat Neck Dress / 100% Lenzing Ecovero Jersey / Royal Blue / Sizes 8-18



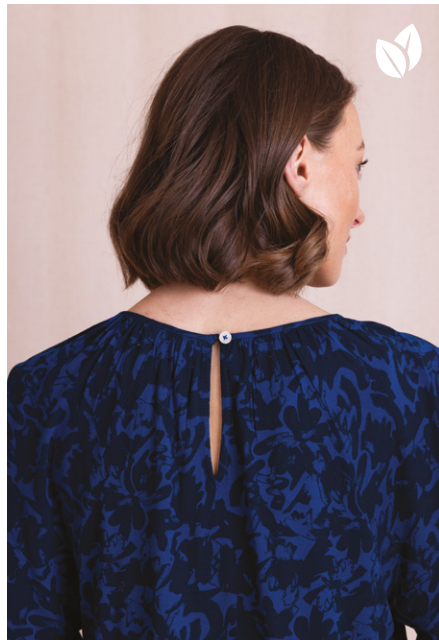
NR2252 / Easy Dress / 100% Cotton Chunky Cord / Navy / Sizes 8-18



HL2261 / Shirt Dress / 100% Lenzing Ecovero Jersey / Royal Blue / Sizes 8-18



HL4273 / Gathered Top  
100% Lenzing Ecovero Jersey  
Royal Blue / Sizes 8-18



NR8067 / Mini Skirt  
100% Cotton Chunky Cord  
Navy / Sizes 8-18



HL4185 / Simple Printed Top  
100% Lenzing Ecovero Jersey  
Royal Blue / Sizes 8-18



NR1124 / Cord Bubble Trousers  
100% Cotton Chunky Cord  
Navy / Sizes 8-18



NR6042 / Cord Jacket  
100% Cotton Chunky Cord  
Navy / Sizes 8-18



NR3202 / Buttoned Through Pinafore Dress  
100% Cotton Chunky Cord  
Navy / Sizes 8-18



# NEUTRAL EDIT



This collection brings together a palette of soft creams, warm caramels, deep navy tones, and rich denim blues - versatile neutrals designed to mix and match effortlessly. Textured knits, relaxed trousers, clean-cut jackets, and easy dresses create a wardrobe that feels both refined and relaxed.

Each piece works seamlessly with the next: knitted vests layer beautifully over crisp shirts, denim jackets balance out softer sweaters, and tailored neutrals pair with every shade in the edit. The result is a timeless, wearable capsule built on simplicity, comfort, and effortless style.



**K07094 / Cardigan**  
80% GOTS Organic Cotton, 20% Wool  
Wax / Sizes S, M, L

**KP7114 / Pointelle Knit Jumper**  
59% Recycled Polyester, 18% Polyester,  
15% Nylon, 7% Wool, 1% Elastane  
Caramel / Sizes S, M, L



**KP7097 / Pointelle Knitted Vest**  
59% Recycled Polyester, 18% Polyester,  
15% Nylon, 7% Wool, 1% Elastane  
Caramel / Sizes S, M, L

**CD1125 / Barrel Leg Trousers**  
100% Cotton Drill  
Ochre / Sizes 8-18



**CD6044 / Patch Pocket Jacket**  
100% Cotton Drill  
Wax / Sizes 8-18



**CD6044 / Patch Pocket Jacket**  
100% Cotton Drill  
Ochre / Sizes 8-18





**NR6042 / Cord Jacket**  
100% Cotton Chunky Cord  
Navy / Sizes 8-18

**NR1124 / Cord Bubble Trousers**  
100% Cotton Chunky Cord  
Navy / Sizes 8-18



**NR6042 / Cord Jacket**  
100% Cotton Chunky Cord  
Duck Egg / Sizes 8-18

**NR2252 / Easy Dress**  
100% Cotton Chunky Cord  
Navy / Sizes 8-18



**NR2252 / Easy Dress**  
100% Cotton Chunky Cord  
Duck Egg / Sizes 8-18



**KP7114 / Pointelle Knit Jumper**  
59% Recycled Polyester, 18% Polyester,  
15% Nylon, 7% Wool, 1% Elastane  
Wax / Sizes S, M, L

**NR8067 / Mini Skirt**  
100% Cotton Chunky Cord  
Navy / Sizes 8-18



**KO7097 / Knitted Vest**  
80% GOTS Organic Cotton, 20% Wool  
Navy / Sizes S, M, L

**DN1118 / Wide Leg Jeans**  
100% Cotton Denim  
Denim / Sizes 8-18



**DN6041 / Denim Jacket**  
100% Cotton Denim  
Denim / Sizes 8-18

**CD1130 / Wide Leg Trousers**  
100% Cotton Drill  
Wax / Sizes 8-18



# INDEX / OUR DRESS COLLECTION



CD3203 / Ochre Pg 15

CD3203 / Teal Pg 31

NR3202 / Navy Pg 51

NR3202 / Burgundy Pg 16

DN3205 / Denim Pg 46

GK3179 / Teal Pg 36

GK3179 / Navy Pg 44



SC3204 / Burgundy Pg 22

PF2206 / Sunset Pg 19

PF2206 / Navy Pg 28

NR2252 / Duck Egg Pg 33, 54

NR2252 / Navy Pg 50, 54

BS2256 / Navy Pg 43

BS2256 / Burgundy Pg 13



PF2251 / Navy Pg 28

EM2253 / Teal Pg 31

SC2255 / Sunset Pg 18

SC2255 / Burgundy Pg 22

TT2164 / Sunset Pg 12

SP3171 / Navy & Duck Egg / Pg 35

SP2156 / Navy & Duck Egg / Pg 35



TJ2249 / Burgundy Pg 23

HL3199 / Ochre Pg 17

HL3199 / Royal Blue Pg 50

HL2261 / Ochre Pg 16

HL2261 / Royal Blue Pg 50

OC2258 / Citrus Pg 28

## / OUR JACKETS



NR6042 / Burgundy Pg 16

NR6042 / Duck Egg Pg 33, 54

NR6042 / Navy Pg 51, 54

CD6044 / Ochre Pg 15, 53

CD6044 / Wax Pg 44, 53

DN6041 / Denim Pg 46, 55

## / OUR SKIRTS



NR8067 / Burgundy Pg 16

NR8067 / Duck Egg Pg 33

NR8067 / Navy Pg 51, 55

BS8061 / Burgundy Pg 12

BS8061 / Navy Pg 43

PF8066 / Navy Pg 29



# INDEX / OUR RECYCLED KNITWEAR



KR7111 / Sunset  
Pg 13



KR7111 / Duck Egg  
Pg 34



KR7111 / Lilac  
Pg 42



KR7111 / Teal  
Pg 36



KR7097 / Navy  
Pg 48



KP7097 / Wax  
Pg 48



KP7097 / Caramel  
Pg 15, 53



KO7097 / Citrus  
Pg 37



KO7097 / Teal  
Pg 37



KO7097 / Wax  
Pg 45



KO7097 / Navy  
Pg 45, 55



KR7110 / Sunset  
Pg 13



KR7110 / Duck Egg  
Pg 34



KR7110 / Lilac  
Pg 42



KR7119 / Wax & Navy  
Pg 48



KR7108 / Wax  
Pg 20



KR7108 / Navy  
Pg 48



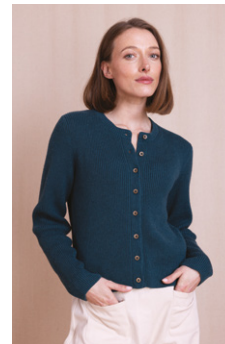
KP7114 / Wax  
Pg 48, 55



KP7114 / Caramel  
Pg 15, 53



KO7094 / Citrus  
Pg 29, 36



KO7094 / Teal  
Pg 36



KO7094 / Wax  
Pg 45, 53



KO7094 / Navy  
Pg 45

## / OUR TROUSERS



NR1124 / Duck Egg  
Pg 33



NR1124 / Burgundy  
Pg 16, 17



NR1124 / Navy  
Pg 51



CD1125 / Ochre  
Pg 15, 53



CD1125 / Wax  
Pg 44



TJ1123 / Burgundy  
Pg 23



OC1050 / Navy  
Pg 35, 49



OC1043 / Navy  
Pg 49



CD1130 / Ochre  
Pg 15



CD1130 / Wax  
Pg 29, 32, 44, 46, 55



CD1130 / Teal  
Pg 31



SC1122 / Burgundy  
Pg 23



DN1118 / Denim  
Pg 46, 49, 55



# INDEX / OUR TOPS



OC4280 / Duck Egg Pg 34  
OC4280 / Ivory Pg 20, 42, 49  
OC4279 / Ivory Pg 46, 49  
OC4249 / Navy Pg 29  
OC4249 / Citrus Pg 29  
TJ4284 / Burgundy Pg 23  
SP4284 / Navy & Duck Egg / Pg 34



HL4185 / Royal Blue Pg 51  
HL4185 / Ochre Pg 16  
HL4273 / Royal Blue Pg 51  
HL4273 / Ochre Pg 17  
GK4286 / Teal Pg 36  
GK4286 / Navy Pg 44



PF4273 / Sunset Pg 19  
PF4273 / Wax Pg 32  
SC4282 / Burgundy Pg 22  
SC4282 / Sunset Pg 18  
TT4290 / Sunset Pg 12  
SC4277 / Sunset Pg 18  
SC4277 / Burgundy Pg 23



EM4289 / Wax Pg 20  
EM4289 / Teal Pg 31

## / OUR SHIRTS

## / TUNIC



GK4278 / Teal Pg 36  
GK4278 / Navy Pg 44  
EM4283 / Wax Pg 20  
EM4283 / Teal Pg 31  
BS4221 / Navy Pg 42  
BS4221 / Burgundy Pg 13



PF4288 / Wax Pg 32  
CP4288 / Citrus Pg 29  
CP4288 / Pink Pg 20  
CP4288 / White Pg 33, 49  
SP5108 / Navy & Duck Egg Pg 35



# HOW TO ORDER

## CONTACT US

### NOMADS

**Customer Services & Enquiries:**  
0044 1266 777338  
info@nomadsclothing.co.uk

**House Accounts**  
Nim Johal - 07835 266 358  
nim@nomadsclothing.co.uk

**Order with us and receive:**  
Low First Minimum Order  
Stock for Season Top-ups  
In Season Offers  
Free Hi-Res Images

### UK AGENTS

**South East & East Anglia**  
Simon Smith - 07919 922676  
simon@simonsmithagencies.com

**Cumbria, Scotland & Northern Ireland**  
Karen Oliver - 07813 075099  
karenoliverfashion@gmail.com

**Midlands, North England & North Wales**  
Cultivate Agency - 01612 379555  
Beki@cultivateagency.co.uk

**South West and South Wales**  
Lesley Rock - 07890 189022  
lesley@nomadsclothing.co.uk

### EU AGENTS






**Germany - Milk**  
Jochen - 0049 175 4054633  
agentur@milk-concept.de

**Italy – Andes Organic**  
Claudio - 0039 0432 501473  
info@andesorganic.it

**Netherlands & Belgium  
- Scheev Agency**  
Wilma - 0031 652 415723  
wilma@scheev.nl

## CONTACT US

### SOCIAL MEDIA

-  facebook.com/nomadsfairtradeclothing
-  twitter.com/nomadsclothing
-  pinterest.com/nomadsclothing
-  instagram.com/nomadsclothing
-  uk.linkedin.com/company/nomads-clothing

### OUR MODEL

Our model Saskia is 5'8 and wears a size 10

### SIZE GUIDE

UK Women	Bust (cm)	Waist (cm)	Hip (cm)
8	88	73	91
10	93	78	96
12	98	83	101
14	103	88	106
16	108	93	111
18	113	98	117
20	118	103	122

S	88-98	73-83	91-101
M	98-108	83-93	101-111
L	108-118	93-103	111-122





# nomads

LIVE • BREATHE • WEAR



## Nomads Clothing

01566 777338

[nomadsclothingwholesale.com](http://nomadsclothingwholesale.com)

[info@nomadsclothing.co.uk](mailto:info@nomadsclothing.co.uk)

Nomads Clothing, Himalayan House,  
430 Thurmaston Blvd, Leicester, LE4 9LE



GOTS-11381



We are proud members of GOTS and Common Objective. Printed using vegetable based inks and FSC certified paper. Please recycle me after use.